

CHIOS WITHIN THE NETWORK OF PRODUCERS OF ZEEST'S "PROTOHASIAN" LINEAGE OF TRANSPORT AMPHORAE

Pierre DUPONT

ArArLab, Maison de l'Orient, Lyon, France; e-mail: pierre.dupont15@orange.fr

Keywords: East-Greek transport amphorae, Zeest's "Protohasian" type, Chian variant, Late Archaic period

Abstract: Lab results suggest the existence, side by side with the canonical lineage of the archaic Chian transport amphorae, of a local variant of containers of Zeest's "Protohasian" type.

Cuvinte-cheie: transport de amfore din Grecia estică, tip Zeest „Prototasian”, producție Chios, perioadă Arhaică Târzie

Rezumat: Rezultatele de laborator sugerează existența, alături de descendența canonică a amforelor arhaice de transport din Chios, a unei variante locale a amforelor de tip Zeest „Prototasian”.

Whereas recent lab results invite today to reattribute to mainland North-Ionian centres of manufacture the major part of Zeest's "Samian" and "Protohasian" varieties of archaic transport amphorae¹, the connected question to be asked lies in the contribution of Chios island to the chorus.

Even if no categorical answer can be given to this keen question at the present stage, some lab advances can be put forward, which suggest the existence of a Chian branch within the class of these widely distributed containers².

Typologically, the involved shapes are only specifically recorded as such *apud* Monakhov's "amphoras from undetermined North-Aegean centres, with multibevelled foot ("Protohasos"), 4th series"³, all dated in the first quarter of the 5th century B.C. (Fig. 2).

The Lyon lab data base for Chios gathers some 160 samples or so, the chemical patterns of which are divided into several separate groups, some of them corresponding to the products of contemporary workshops (Siderounta, Pyrgi, Armolia), others to those collected on ancient sites (Chios town, Limnia, Emporio...).

The data processing of this collection of samples from various parts of the island has evidenced a partition into several groups of chemical patterns⁴, all distinct from those of opposite North-Ionian centres of manufacture, viz. Clazomenae, Erythrae and Teos, despite the fact that the island, on both the geological and geomorphological points of view, appears as the extension of the facing Erythraean peninsula, separated from it by a narrow channel. Some of these Chian groups appear more or less connected with the

above-mentioned modern pottery workshops, the others with ancient sites, first of all Emporio and Chios Town.

In comparative tests operated between our samples of both Zeest's "Samian" and "Protohasian" jars from Black Sea settlements (Fig. 3: samples OLV 11–12, DUP 556) with this Chian data base, one cluster (referred to as "Chios 2") (Fig. 1), gathering both various "canonical" archaic and classical Chian amphorae fragments from an extra-muros potters' workshop's dump from Chios lower town⁵ and a complete set of the archaic variant of Zeest's "Protohasian" type, often bearing at the upper part of the neck the well-known painted circle already attested on standard Chian series of jars (Fig. 3 center down: sample DUP 560), thus strongly suggesting a common Chian origin.

The fact that all our samples of this special variant of Zeest's "Protohasian" included within this cluster were all collected on Pontic settlements, raises two types of questions, viz. both the representativeness of similar products among the finds of Chios island itself and of their exact place of manufacture throughout the island.

As concerns the first point, even if pieces of evidence at our disposal are still sparse, some fragments brought to light in the above-mentioned potters' workshop's dump from Chios town can be put forward, viz. those represented *apud* Tsaravopoulos 1986 contribution: the rim fragment pl. 31:7 as well as the two multi-bevelled feet pl. 31:5 (Fig. 4). An additional example might be represented by a single fragment of a rim from Chios upper-town, the chemical pattern of which also falls within the same Chian cluster, though rather ascribable to a possible imitation of Zeest's standard "Samian" type (Fig. 5).

Conversely, the fact that these samples of Zeest's "Protohasian" type all fall into a group together with

¹ Dupont 2010; Dupont 2017; Dupont 2019, p. 55–58.

² Dupont 2019, p. 57, fig. 8.

³ Monakhov *et alii* 2019, p. 117–118, NA. 10–12.

⁴ Thus confirming Whitbread's former mineralogical investigations (see Whitbread 1995, p. 134–153, esp. p. 143–144).

⁵ Tsaravopoulos 1986, p. 136–139, pl. 30–31, 37.

others of late archaic amphorae of “canonical” Chian type from the Chios lower town can hardly be interpreted as resulting from a fortuitous overlapping of chemical patterns. The same remark applies to the small painted circle appended at the upper part of the neck, to be found in common on the “canonical” Chian lineage, ranging from the third quarter to the turn of the 6th century B.C. and more especially on shapes of Monakhov’s “funnel-necked” type⁶.

Moreover, that all our samples of this particular variant of Zeest’s “Protothasian” jars fall within the same cluster, together with a set of various “canonical” Chian jars brought to light in several parts of the Chios lower town, and another one of Chian white-slipped wares – some of them decorated in the “Sphinx-and-Lion Style” – from the representative site of Emporio can hardly lead to interpret them as imports, as it might be the case in the main harbour site of the island.

Since one opts for a probable Chian origin, their most probable place of manufacture might well have been Chios town itself, where several ancient workshops have been brought to light in various parts of the city. In that case, a last point to elucidate would be to explain the somewhat anecdotic brief period of activity of the workshop manufacturing this lineage of containers, concurrently with the standard contemporary canonical swollen-necked models.

Summing up, it appears that, just like the Erythraean workshops have imitated both shapes and technique of white-slipped Chian wares, Chian amphorae workshops also occasionally produced some imitations of mainland North-Ionian models, viz. of Zeest’s “Samian and “Protothasian” types.

Nota

As concerns Emporio’s finds of Chian white-slipped wares, it then appears that, instead of forming a single one, they mainly fall into two separate groups of chemical pattern, one ascribable to a Chios town centre of manufacture and the other to a still unidentified one, either local or a nearby producer (Phanai ?).

REFERENCES

- Dupont 2010 – P. Dupont, *Les amphores « samiennes » et « protothasiennes » de Zeest : vers une relocalisation en Ionie du Nord ?*, in: D. Kas-sab-Tezgör, N. Inaishvili (eds.), *Production and Trade of Amphorae in the Black Sea, International Round-Table Conference, Batumi-Trabzon, 27th–29th April 2006 [= PATABS 1]*, Varia Anatolica I, Istanbul, 2010, p. 39–43, pl. 23.
- Dupont 2017 – P. Dupont, *Erythrai versus South-Ionia: “Samian” amphoras revisited*, in: V. D. Kuznetsov, A. A. Zavoikin (eds.), *Materialy po Arkheologii i Istorii Fanagorii*, Fasc. 3, Moscou 2017 (2018), p. 88–100.
- Dupont 2019 – P. Dupont, *Archaic East Greek Transport Amphorae: Secure Advances and Muddles. An Assessment*, in: G. Tsetschladze, S. Atasoy (eds.), *Settlements and Necropoleis of the Black Sea and its Hinterland in Antiquity: Select Papers from the Third International Conference ‘The Black Sea in Antiquity and Tekkeköy: An Ancient Settlement on the Southern Black Sea Coast’, 27-29 October 2017, Tekkeköy, Samsun*, Oxford, 2019, p. 52–68.
- Monakhov *et alii* 2019 – S. Monakhov, E. Kuznetsova, A. Chistov, N. Churekova, *Античная амфорная коллекция Государственного Эрмитажа VI-III вв. до н.э.*, Саратов, 2019.
- Tsaravopoulos 1986 – Ar. Tsaravopoulos, *Η αρχαία πόλη της Χίου*, *Horos* 4, 1986, p. 124–144.
- Whitbread 1995 – I. K. Whitbread, *Greek transport amphorae. A petrological and archaeological study*, Athens – Oxford, 1995.

⁶ Monakhov *et alii* 2019, p. 73, Ch. 5–6.

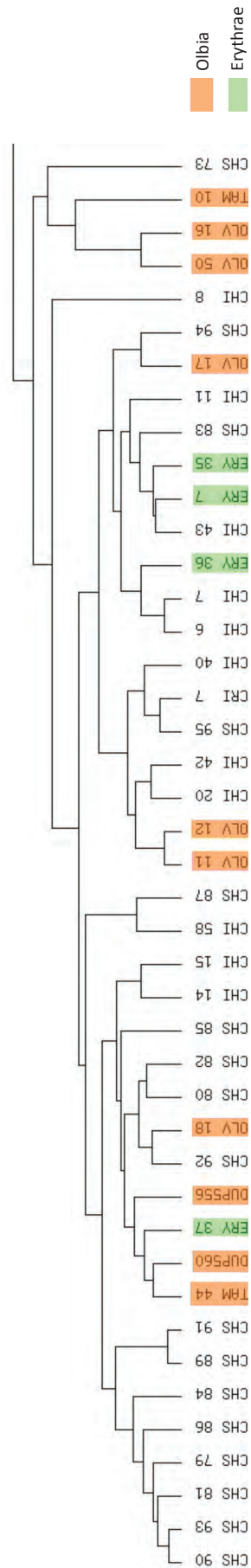


Figure 1. Dendrogramme Chios reference / Zeest's "Samian" and "Protothasian" amphoras: Cluster "Chios 2".



Figure 2. Zeest's "Protothasian" jar from Euxine settlements.



OLV 12



DUP 556



OLV 11



DUP 560



Figure 3. Zeest's "Samian" and "Protothasian" amphoras: Chian variants from Istros and Olbia.

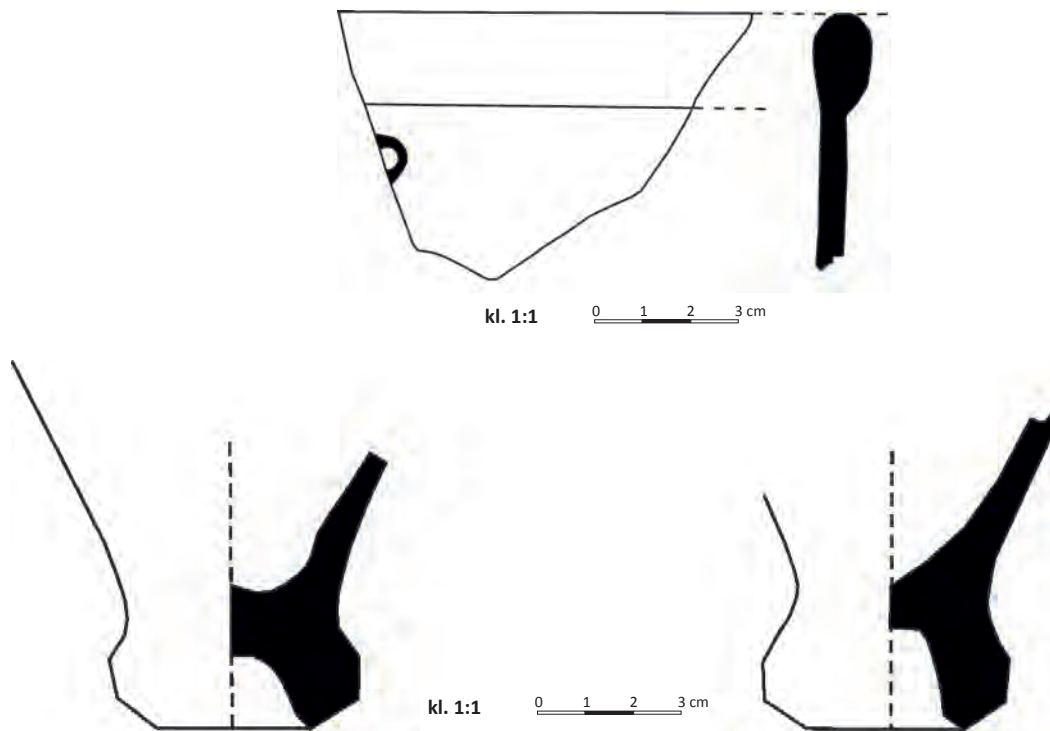


Figure 4. Sherds of Zeest's "Samian" and "Protothasian" types from Chios lower town amphorae workshop (after Tsaravopoulos 1986).



Figure 5. Zeest's "Samian" and "Protothasian" amphoras: Chian variant from Chios upper town.